



Power Generation

We take pride in engineering and packaging high-performance power products that are precisely built to deliver reliable and durable operation across diverse applications and environments.

Whether you are looking for prime, continuous or standby power, our team possesses extensive power system knowledge and ability to assist you in selecting the right equipment options tailored to your project requirements. We offer a range of choices for fuel types and controls to cater to your specific needs.

Our designs also ensure compliance with required noise, odor, and emissions standards. With a Compass-built power solution, you can trust that the performance and environmental aspects are thoughtfully addressed.

All our power units are mounted on skids or trailers, so that once built they are easy to ship, install, and commission anywhere you need them.

Configurations

- Remote, Off-Grid
- Cogeneration or Combined Heat and Power (CHP)
- Prime, Standby or Emergency Backup
- Mobile Power (Trailer-Mounted)
- Grid Connection

Power Output

- 250 - 3800 kWe

Voltage

- 480 V - 13.8 kV

Frequency

- 50 – 60 Hz

Fuel Type

- Natural Gas
- Liquefied Natural Gas (LNG)
- Compressed Natural Gas (CNG)
- Renewable Natural Gas (RNG) / Biogas
- Diesel
- Hydrogen Blend
- Other Alternative Gases

Our Capabilities

- Engineering & Design
- Fabrication & Packaging
- Parts & Field Service
- Global Logistics
- Financing

Industries / Markets Served

- Flare Gas Recovery
- Oil + Gas
- Mining
- Industrial + Commercial
- Technology + Data Centers

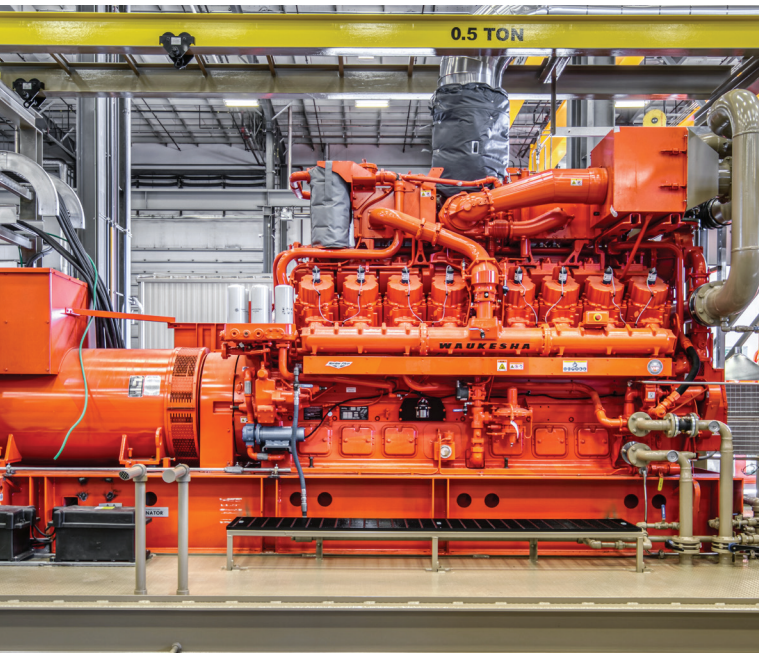
COMPRESSION | PROCESS | POWER | RETROFIT | PARTS + SERVICE

Power Systems at Work

Powering Data Centers *Island-Mode Flare Gas-to-Power*

Remote continuous power is generated using flare gas-to-power data centers. By repurposing previously wasted flare and vent gas from well sites, these power systems, designed and packaged by Compass, are helping to lower emissions across the United States.

- Driver:** Waukesha 9504GSI S5 rated at 1.8MW @ 1200 RPM (480 V)
- Air Cooler:** Air-X 132EF
- Control Panel:** Waukesha Engine System Manager 2 (ESM2)
- Other Features:** Arctic & Warm Weather Packaging, Custom Color, Engine Service Cranes, Switch Gear, emPact Emission Control



Sustainable Power Facility *Flare Gas-to-Power Direct to Grid*

This 15MW flare gas-to-power facility was engineered and designed with nine (9) Compass natural gas Genset packages, each equipped with the advanced Waukesha VHP 9504 GSI S5 engine. These engines are known for their high performance, durability, and low emissions, making them an ideal choice for sustainable power generation.

- Driver:** Waukesha 9504GSI S5 rated at 1.8MW @1200 RPM (13.8 kV)
- Air Cooler:** Air-X 132EF
- Control Panel:** ECP8000 Genset Control System
- Other Features:** Artic-Style Packaging, Custom Color, Engine Service Cranes, emPact Emission Control System

COMPRESSION | PROCESS | POWER | RETROFIT | PARTS + SERVICE



1.855.262.2478

sales@compassnrg.com

compassnrg.com